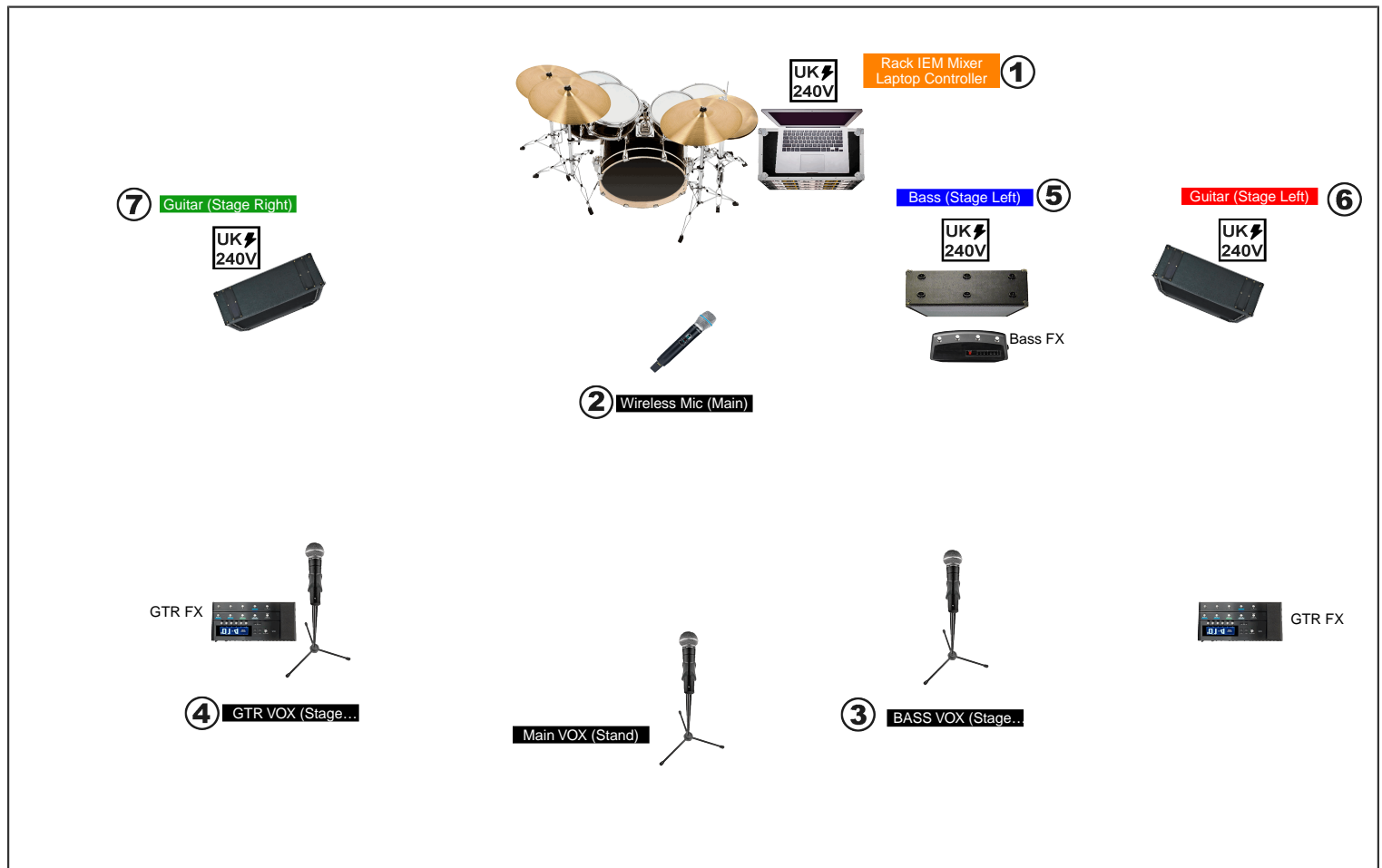


TIME STANDS STILL TECHNICAL RIDER DETAILS



1. MIXER - SUPPLY A STEREO XLR FEED FOR BACKING TRACKS TO FOH. THESE WILL INCLUDE SYNTHS, KEYBOARDS, BACKING VOCALS AND FX.

2. MAIN VOX (CENTRE STAGE)- WE REQUIRE MIC STAND BUT THIS WILL BE A WIRELESS MICROPHONE WE WILL SPLIT A FEED FOR IEM AND FOH. THIS WILL BE A MIX OF CLEAN AND HARSH VOCALS.

3. BASS VOX (STAGE LEFT)- STANDARD VENUE SET UP WE WILL ADD AN XLR SPLITTER AT THE MICROPHONE TO ALSO TAKE A FEED TO OUR IEM SYSTEM. THIS WILL BE CLEAN SUNG BACKING VOCALS

4. GTR VOX (STAGE RIGHT)- STANDARD VENUE SET UP WE WILL ADD AN XLR SPLITTER AT THE MICROPHONE TO ALSO TAKE A FEED TO OUR IEM SYSTEM. THIS WILL BE SCREAMED BACKING VOCALS

5. BASS (STAGE LEFT)- BASS WILL BE PLAYED THROUGH CABINET WHICH IF NOT MICD CAN ALSO SUPPLY DI.

6. GTR STAGE LEFT - GTR WILL BE FED TO CABINET AND DI TO FOH CAN BE SUPPLIED VIA 1/4" JACK

7. GTR STAGE RIGHT - GTR WILL BE FED TO CABINET AND DI TO FOH CAN BE SUPPLIED VIA 1/4" JACK

POWER REQUIREMENTS - AS PER IMAGE = 1 X SOCKET FOR MULTI SOCKETS TO BE PLUGGED IN AT POSITIONS 1,5,6&7

BACKLINE REQUIREMENTS:

WE CAN SUPPLY FULL BACKLINE OF 5 PIECE DRUM KIT, 1 X 2X12 JET CITY GTR CAB, 1 X LINE 6 CATALYST 1X12 GTR CAB, 1 X FENDER RUMBLE 500 BASS CAB, 3 X SM58 VOCAL MICS, IDEALLY WE WOULD LIKE TO BRING MINIMUM BACKLINE UNLESS HEADLINING.